



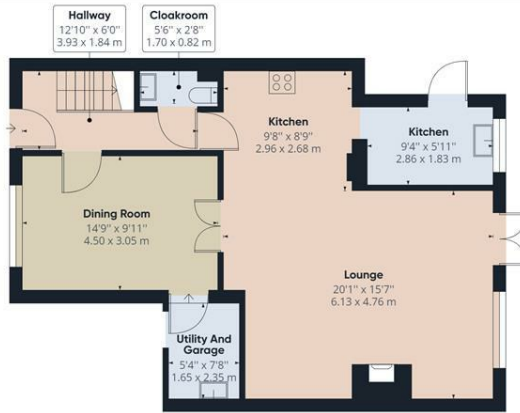
## 11 Goldsworth Drive, Strood, Rochester, Kent, ME2 3NR

**\*4 BEDROOMS\*\*EN-SUITE\*\*CLOAKROOM\*\*UTILITY ROOM\*\*GARAGE\*\*DRIVE\*\*POPULAR DEVELOPMENT\*\*EXTENDED\*\*MODERN DECOR THROUGHOUT\*\*PLANNING PERMISSION FOR LOFT CONVERSION\*\***

This stunning 4 bedroom extended semi detached house on the popular 'Merryfields' development in Strood has just become available to the sales market. We strongly recommend you book your internal viewing as soon as possible. Tucked away on a quiet cul-de-sac this house boasts a large driveway offering parking for 4 cars. The entrance area is inviting and you will be eager to see the remainder of this home. The elegant dining room would be the perfect area to host dinner parties and the ultra modern kitchen is definitely the heart of this home and part of the kitchen is open plan to the family lounge. A handy downstairs WC is located off the hall. The integral garage could be converted to a room subject to the relevant consents and utilised as a gym/study or office, the choice is yours. The bathroom and 4 bedrooms are located upstairs and the main bedroom has a touch of luxury with the convenience of an en-suite shower room. As standard the home comes with double glazed windows and gas central heating. Externally the enclosed rear garden is easy to maintain with artificial lawn and comes with a purpose built shed. The property also has planning permission granted for a loft conversion for two further bedrooms. Goldsworth Drive is conveniently located within a short distance to local amenities including schools, shops, transport links via road and rail. Being ready to move into, please call the office to book your internal viewing. If you would like a quick peek before your viewing there is a virtual tour available.  
Council Tax Band E

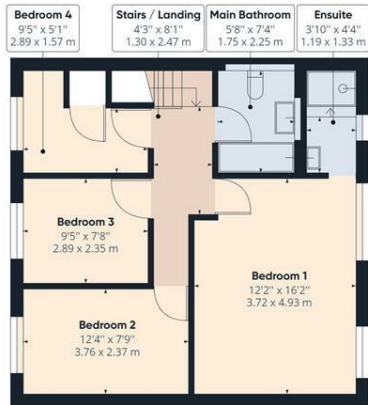
- 4 BEDROOMS
- EXTENDED
- BATHROOM
- ENSUITE
- UTILITY
- REAR GARDEN
- CLOAK ROOM
- PLANNING PERMISSION
- DRIVE FOR 4 CARS

**£475,000**



Ground Floor Building 1

Approximate total area<sup>(1)</sup>  
 1295.85 ft<sup>2</sup>  
 120.39 m<sup>2</sup>



Floor 1 Building 1

(1) Excluding balconies and terraces

While every attempt has been made to ensure accuracy, all measurements are approximate, not to scale. This floor plan is for illustrative purposes only.

GIRAFFE360

